
Windows 8, 8.1 & 10 software installation

Mag-Tester



Barnes International Ltd.

**Barnes International Ltd
The Loft
St Clair's Farm
Wickham Road
Droxford
Hampshire
SO32 3PW
United Kingdom**

**Tel: +44 (0)1730 231313
Fax: +44 (0)1730 265353**

Email: magsupport@barnestest.com

Contents

Software Installation 1

Windows 8-10 USB Driver Installation..... 5

Software Installation

DO NOT connect the Mag-Tester unit at this stage.


To commence software installation, insert the CD. If the PC is configured to allow it then the installation program will be started automatically, if it does not start automatically, then Navigate to the CD drive and run "MagTesterInstaller.exe"


Or


Click on the icon that appears in the CD folder:


Select Run MagTesterInstall.exe


Name


 FTDI_XP_Support


 Key files


 MagTester


 USB_Drv


 Autorun.inf


 FTD2XX.dll


 Licence.txt


 License.txt

 **MagTesterInstaller.exe**

 MFC71.dll

 msvcp71.dll

 msucr71.dll

 Readme.txt

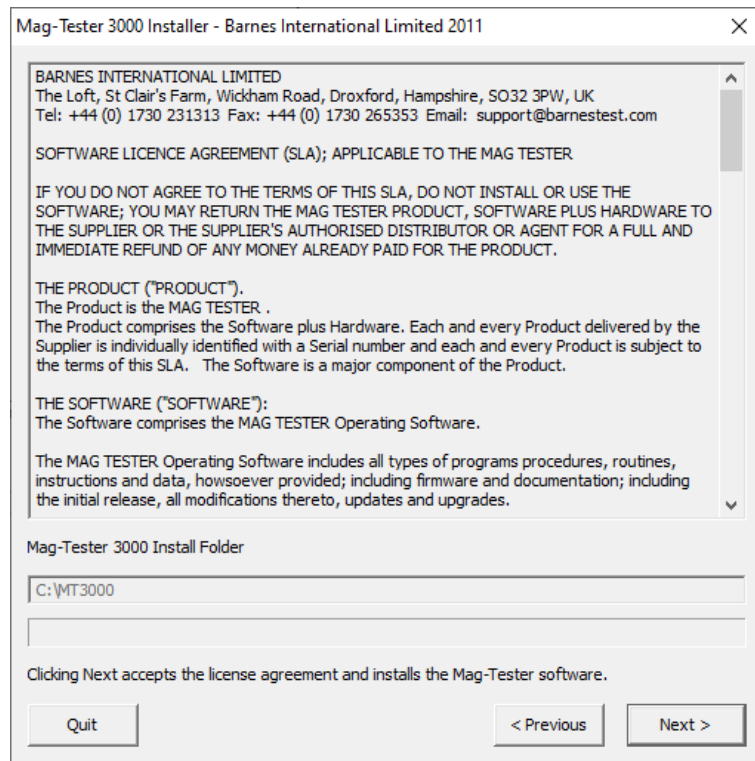
The installer will propose a default folder C:\MT3000 where the software is to be installed; this may be changed if desired.



Note: Never install the software into an existing \MT3000 directory, data will be lost and the software may not work. Either rename the existing directory (preferred) or install using a different directory name for the new install.

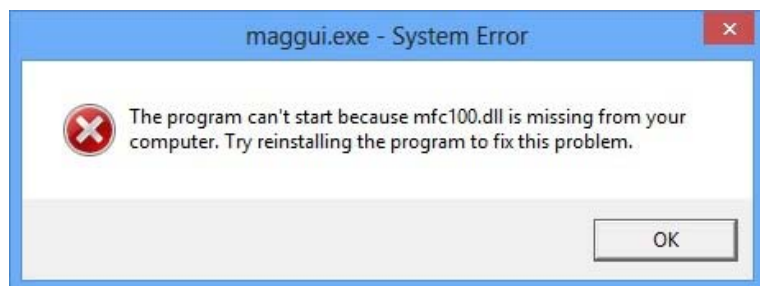
If "Next" is selected then a software licence agreement will be displayed. After reading this, then the installation can proceed by clicking Next. The files will then be transferred automatically and when complete the installation finished window will be displayed. Also a "MT3000" shortcut icon will appear on the desktop.





Start the MT3000 software using the desktop icon provided or by running Maggui.Exe from the folder into which the software has been installed usually C:\MT3000

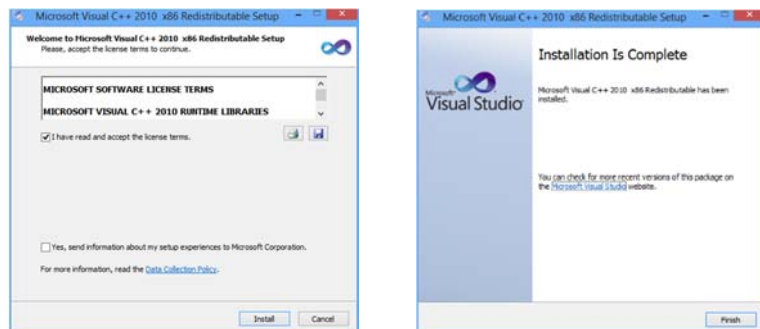
The following error will appear if the OS does not have the correct C++ library files installed:



If this happens, on the CD navigate to:

\\Key files\\C++ Runtime Library Support\\x86

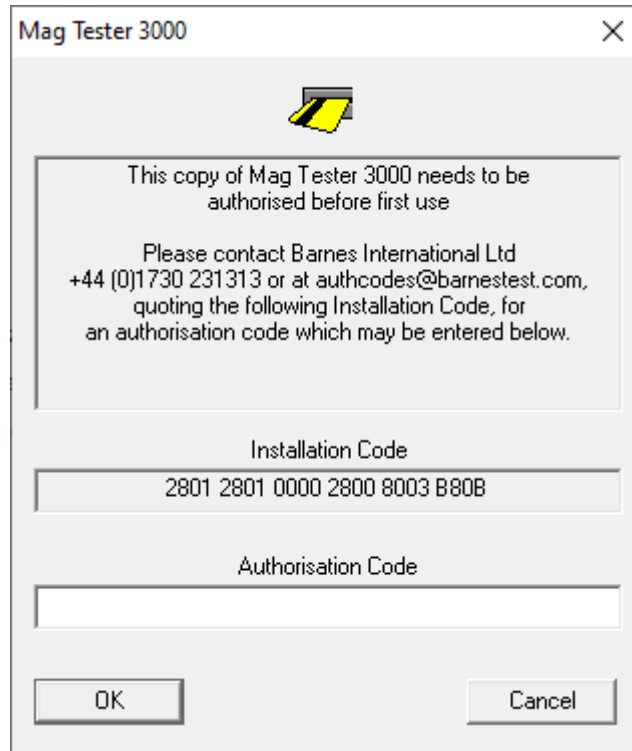
Run vcredist_x86.exe from Microsoft, this will install the missing files.



DO NOT CONNECT THE HARDWARE YET.

Note that at this stage the USB driver for the MT3000 is not yet installed.

Start the MT3000 Software again, the software will provide a 16 character (hex) installation code and request an authorisation code. This authorisation code must be obtained from Barnes before the software will operate any further. Note the installation code (copy and paste for an email), click Cancel on the dialog below and shut down the software.



Authorisation Code Request Dialog

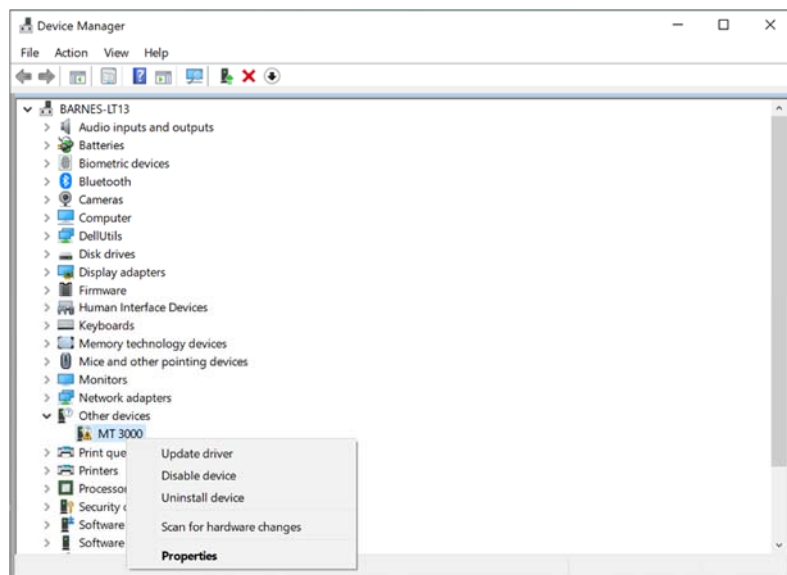
Then contact Barnes at authcodes@barnestest.com for the authorisation code (Contact details are shown on the screen with the installation code, which will be required by Barnes in order to generate the correct authorisation code. Whilst this process is underway close screen and proceed to install the USB Drivers

Windows 8-10 USB Driver Installation

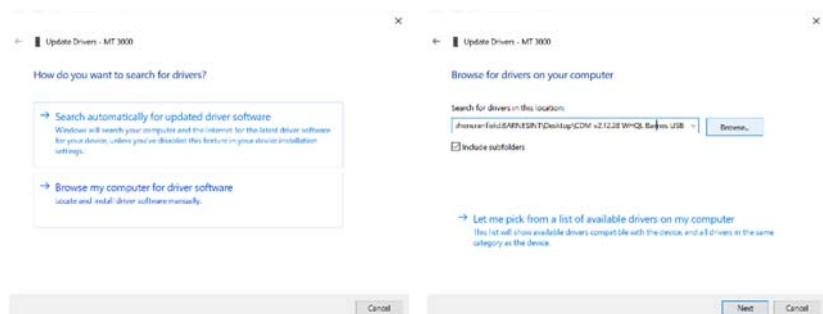
Connect the Hardware

Make sure that ALL Transport restraints have been removed from the Mag-Tester unit, connect the mains supply and switch on using the rear panel switch. Then connect the USB cable between the PC and the Mag-Tester unit. Windows should now recognise that new hardware is connected and may request the driver. Close any request from Windows to install drivers automatically.

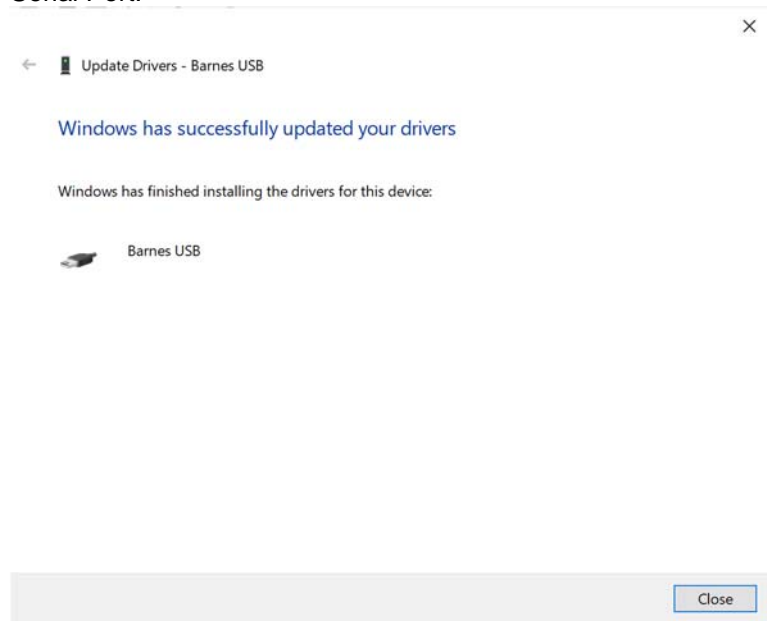
Open Device Manager you should see a new entry under “Other Devices” MT3000, right click MT3000 and select Update Driver Software from the context menu that appears:



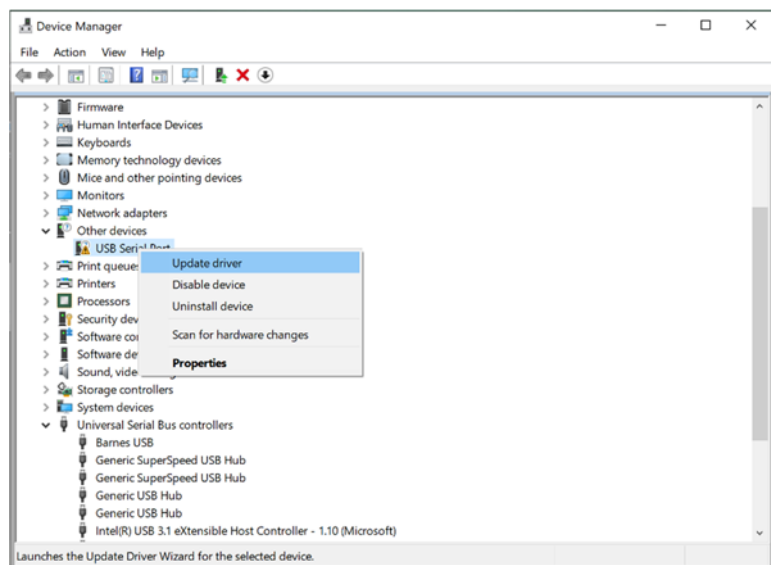
Select “Browse” and navigate to the location of the Driver supplied by Barnes.



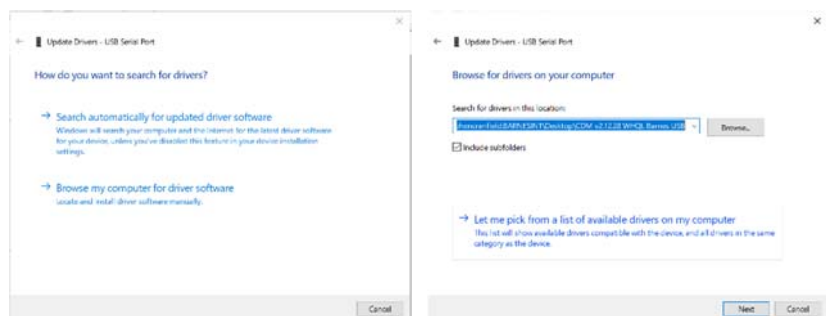
This will install the first driver and the MT3000 entry will change to USB Serial Port.



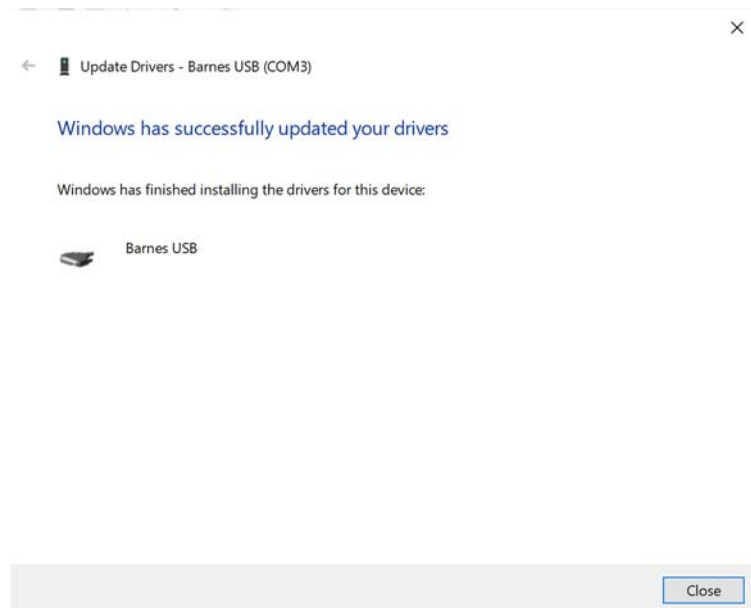
Repeat the process again for the USB Serial Port entry:



Select Browse and navigate to the location of the Driver supplied by Barnes.



You should now have a USB virtual COM port named Barnes USB, note that the actual port number may be different.



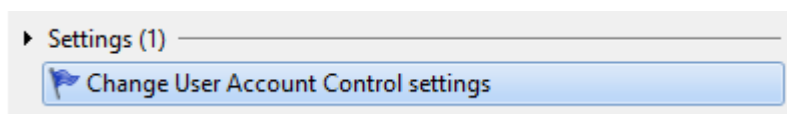
Please note it could be any number COM port

Manual copy of supplied file:

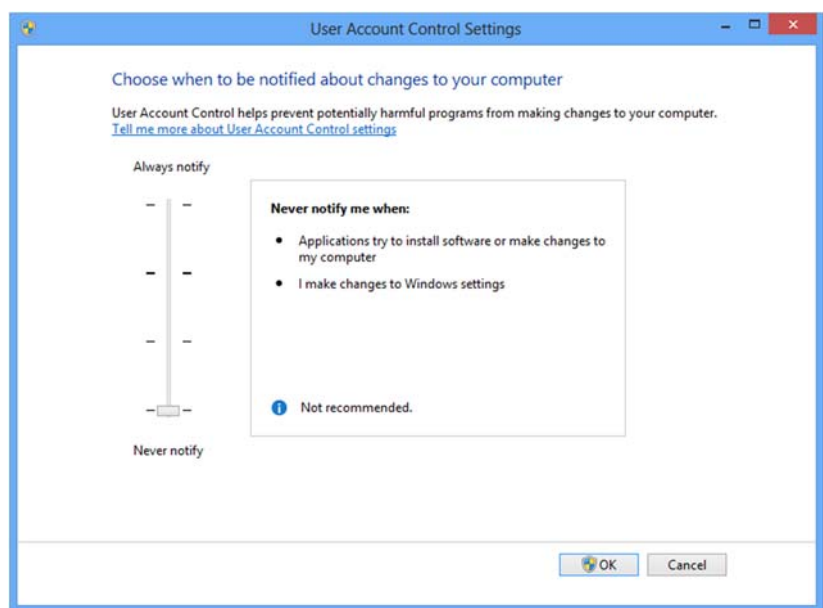
If updating drivers from an existing installation or software CD prior to 2021 it may be necessary to manually copy the supplied FTDXX.dll into your installed software folder replacing the existing copy, this is usually C:\MT3000\

Set UAC settings to Never:

Back on the Windows Main Menu use the search function for UAC, move the mouse cursor to the bottom left corner and select search, type UAC and then click settings and select “change user account control settings.”



Set this to “Never notify”



The first time you start the software (after first ensuring the Mag-Tester is powered and the USB cable is connected) you may receive a yellow warning indicating the hardware is not connected, please close and restart the software to clear this warning. If you cannot select “never” when starting the Mag-Tester software for the first time right click the icon and click “run as Administrator” allow the software to start and then restart it normally.